

# App Volumes Technical Overview

App Volumes 3.0

Sascha Dobrowsky / Andre Lahrmann

vmware®

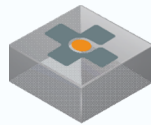


# App Volumes Components



## UNIFIED ADMIN CONSOLE

- Dashboard console for assignments and configuration, App Volume agent brokering and Assignment of applications + Writable Volumes



## APP VOLUMES AGENT

- Redirects file system and registry write operations to writable volume (if required)
- Checks-in with App Volumes Manager



## APPCAPTURE, APPMERGE

- Application capture tools
- Bundling tools used to leverage AppToggle
- Application Customization



## APPSTACK

- Read-only volume containing applications
- One AppStack : Multiple Users
- Policy-Driven Virtualization



## WRITABLE VOLUME

- One writable volume : One user
- Policy-Driven application virtualization

# App Volumes: Requirements

## System Requirements

- Server
  - Hypervisor: ESX/Virtual Center 5.x or later or Hyper-V with SCVMM 2012 SP1
  - 3 vCPUs (set during OVA deployment)
  - 4GB of RAM
  - 1GB of Disk Space
  - PostGRES database (Embedded)
- Client
  - Windows 7, 8.1, 10
  - 1GB of RAM
  - 5MB of Disk Space

## Software Requirements

- App Volumes Mgmt Server
  - Microsoft Active Directory Domain – 2003 functionality or above
  - Supported Browser – Access Mgmt Console
    - IE 9, 10
    - Firefox 10, 11
    - Safari 5.1x
- App Volumes Agent
  - Windows 7 or above

## App Volumes Pre-Requisites



- Active Directory users
  - Account with standard permission for initial setup/connection
  - Administrator level account for AppStack VM Provisioning (Microsoft requirements for Application install)
- vCenter & vSphere Administrator access\*\*\*
- End-users administrator privileges required to install applications into their writable volumes (UIA).
- Agent/Manager communication on port 80/443

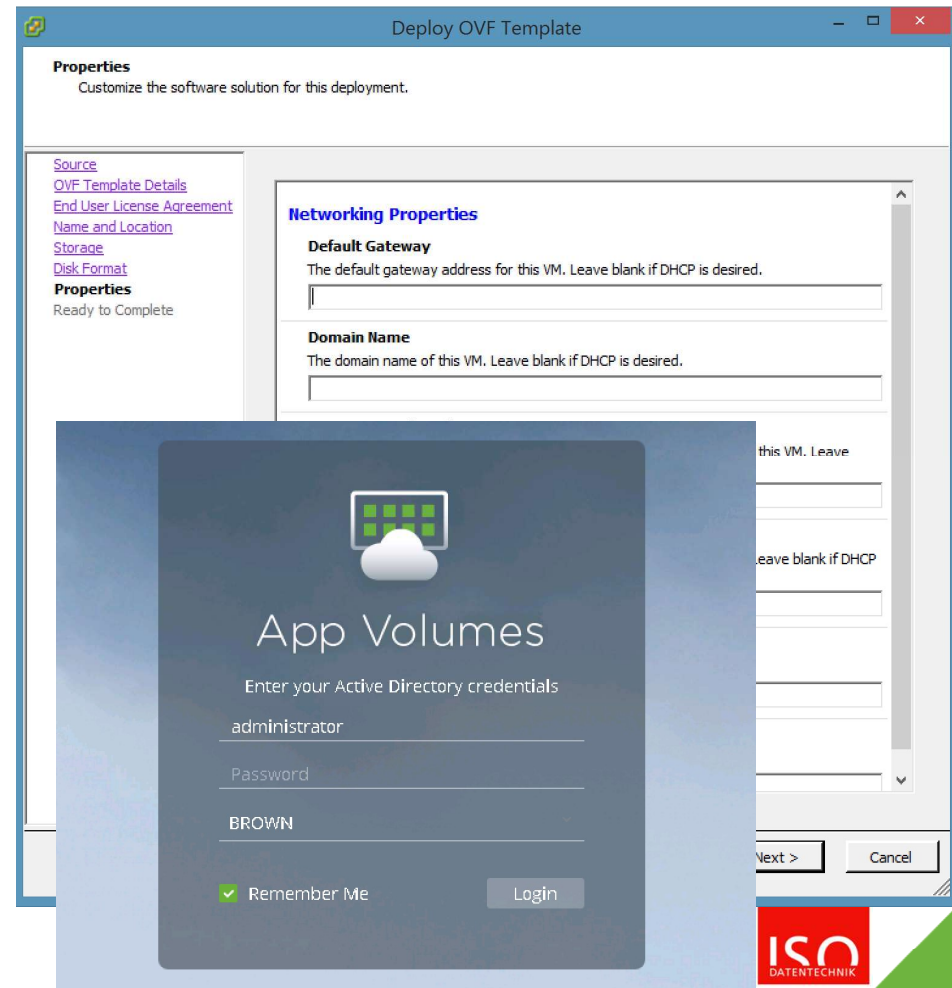
\*\*\* *vSphere & vCenter 6.0U1*

# App Volumes 2.10 versus 3.0 Deployment

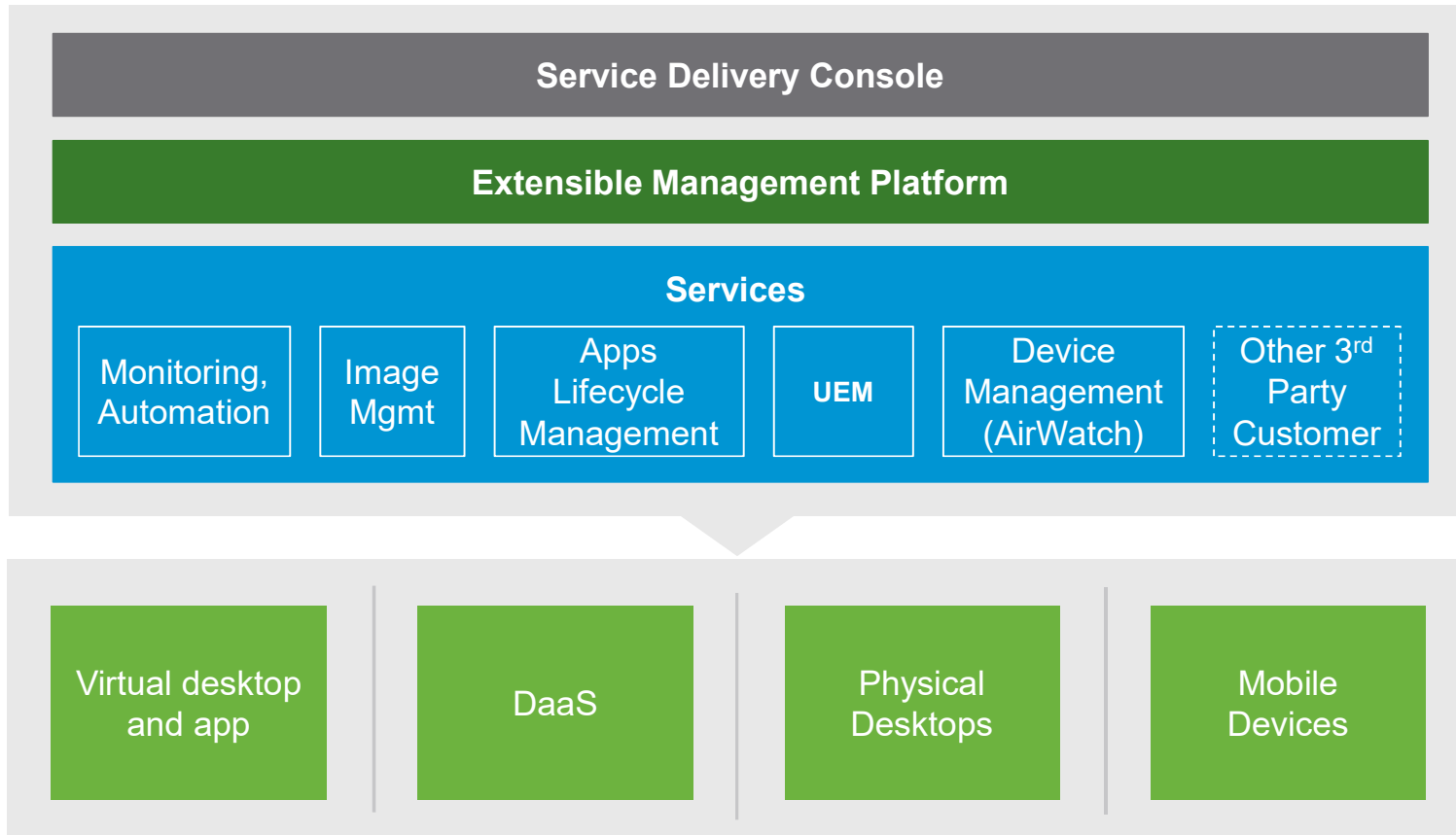
## Prerequisites for App Volumes 2.10 deployment:

- Download OVA & Deploy Virtual Appliance on Windows Server 2008r2 or 2012r2
- Initial Configuration and setup
- Install SQL Database or connect to existing SQL instance
- Install App Volumes Manager
- Initial Configuration and setup

**\*\*\*SSL validation to configure if needed**



# App Volumes 3.0: Designed for Service Delivery



## Approach

- Multi tenant service built on a micro services architecture and REST APIs
- Great Flexibility to add additional components

## Benefits

- Role based service delivery
- Extensible by partners and customers, while preserving integrity of experience
- As a service delivery enables IT to deliver value vs being a cost center


# App Volumes Virtual Appliance

## Overview

- Single Linux Based appliance (Ubuntu)
- Web Based console
- Application & Customization Assignment
- Environment Health Monitoring

## Benefits

- Leverage and Extend existing investments in AD/identity infrastructure
- IT admins have a single place to publish, entitle and audit all resources.
- Admins can efficiently entitle resources
- Granular controls enables IT to efficiently set policies at desired level



app Volumes - 1.0.0.211 alpha  
To manage this VM browse to https://10.138.38.189:5480/

\*\*\*Not off

App Volumes by vmware

DASHBOARD VOLUMES DIRECTORY INFRASTRUCTURE ACT

Licensed to: VMware App Volumes v3.0 EULA Enforced Eval License

User Licenses: 1 of 5000

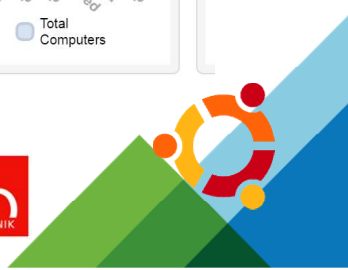
User Utilization

Day	Time	Online Users	Total Users
Sun		0	0
Mon		0	0
Mon	9a	0	0
Mon	3p	0	0
Mon	9p	0	0
Tue		0	0
Tue	9a	0	0
Tue	3p	1	1
Tue	9p	1	1
Wed		0	0
Wed	9a	0	0
Wed	3p	1	1

Computer Utilization

Day	Time	Online Computers	Total Computers
Sun		0	0
Mon		0	0
Mon	9a	0	0
Mon	3p	0	0
Mon	9p	0	0
Tue		0	0
Tue	9a	0	0
Tue	3p	1	1
Tue	9p	1	1
Wed		0	0
Wed	9a	0	0
Wed	3p	1	1

Remember Me Login





# Applications Assignment

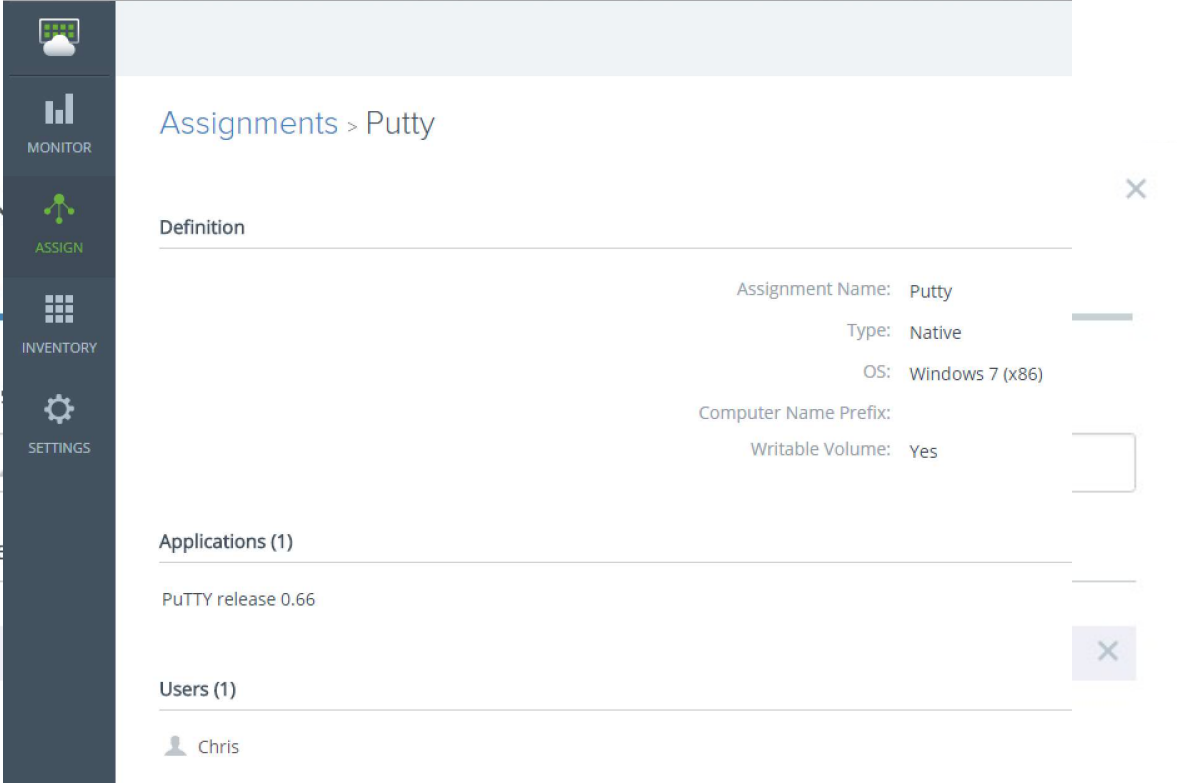
Create New Application Assignment

Target Computers / WV (Optional)

Select Application

Select Users and/or User Groups

Validate Users Entitlement on Desktop



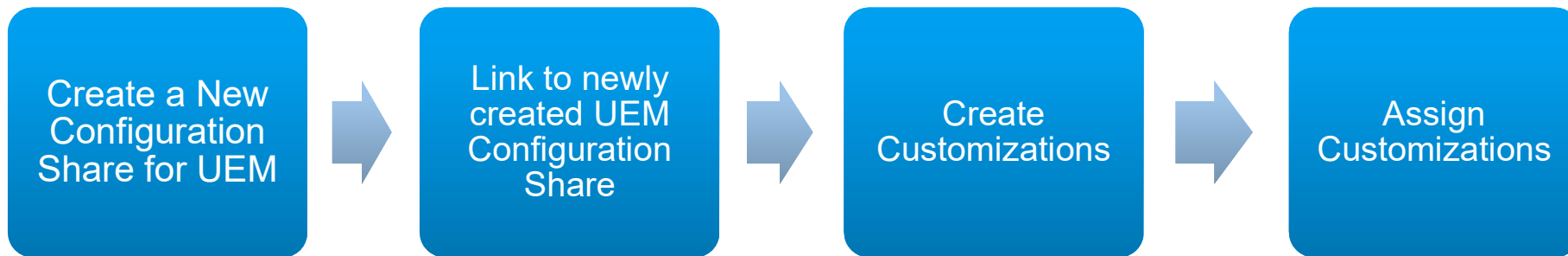
The screenshot shows the VMware vRealize Operations console interface. On the left is a dark sidebar with navigation icons for Monitor, Assign, Inventory, and Settings. The main content area is titled 'Assignments > Putty' and contains a configuration form. The 'Definition' section includes fields for 'Assignment Name: Putty', 'Type: Native', 'OS: Windows 7 (x86)', 'Computer Name Prefix', and 'Writable Volume: Yes'. Below this, the 'Applications (1)' section lists 'PuTTY release 0.66'. The 'Users (1)' section lists 'Chris'. A vertical navigation pane on the left shows 'MONITOR', 'ASSIGN', 'INVENTORY', and 'SETTINGS'.



# Unified Admin Console – UEM Integration



Beta



*Do not point to an existing Production UEM configuration share*

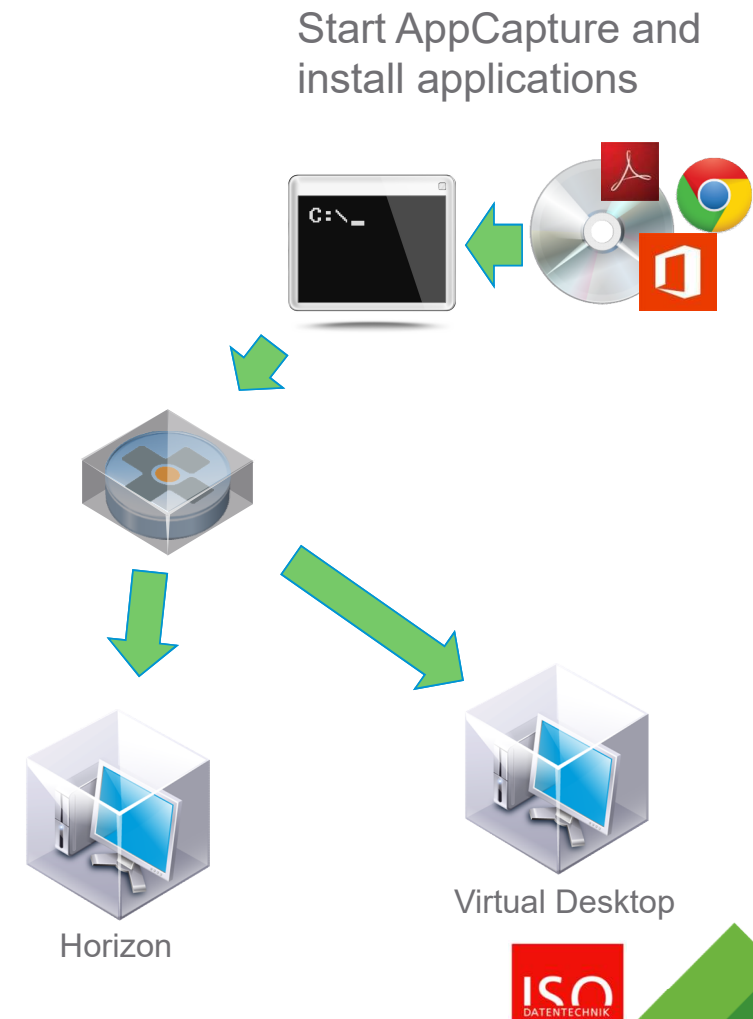
# App Volumes AppCapture

## Features

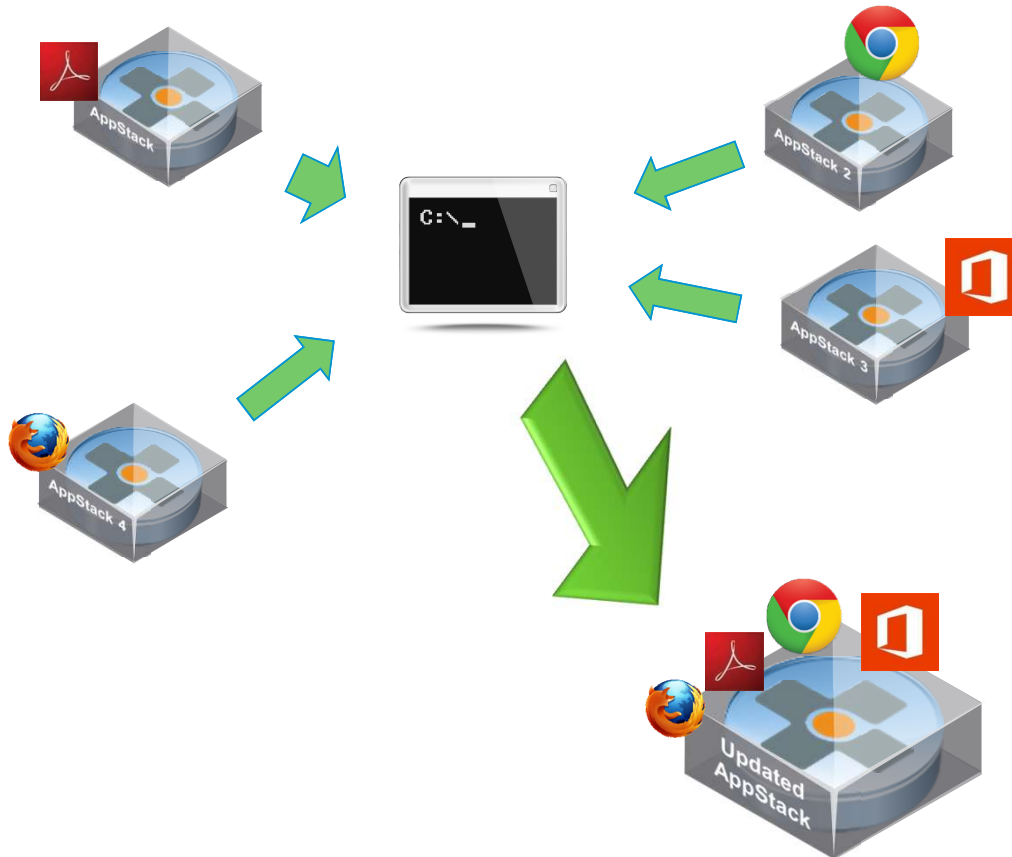
- Standalone Application
- Single format to deliver and manage Applications
- PowerCLI support
- Supports for AppIsolation

## Benefits

- Allows Administrators and Developers to build AppStacks
- Enables possible Automation of packaging
- Native and ThinApp Applications delivered in one consistent way



# Updating and Adding Applications



- Start with existing AppStacks from Application Share
- Run **Merge** on **2 or more** AppStacks
- Create VMDK file from VHD to prepare for import
- Copy Updated AppStacks to Application Share
- Sync Application Share

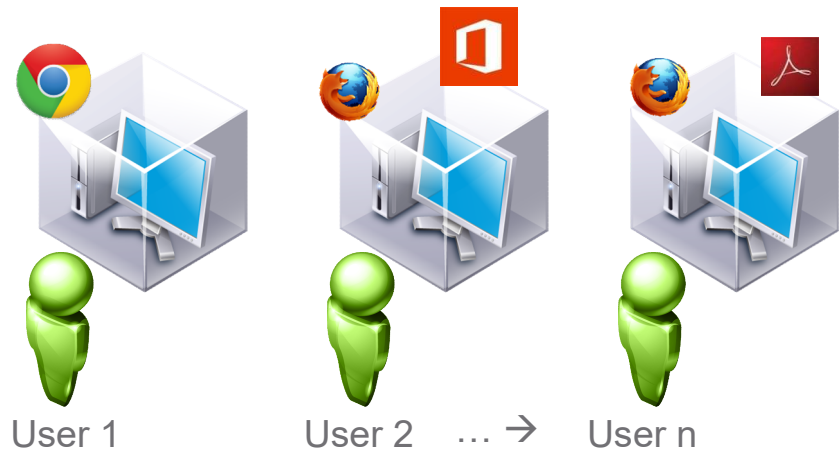
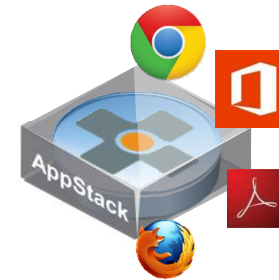
# AppToggle

## Features

- Deliver applications to users targeted specifically for them
- Entitle users based on applications, not AppStacks

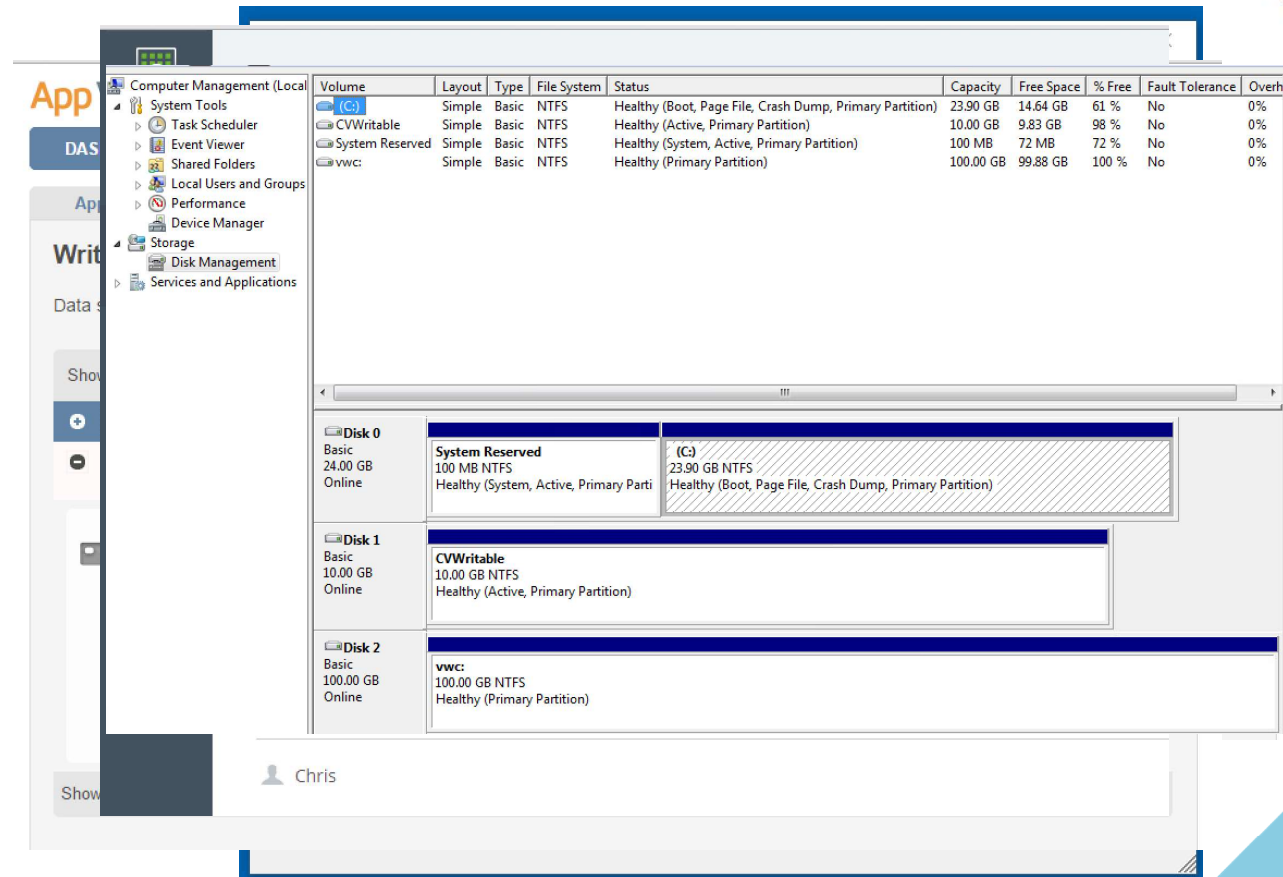
## Benefits

- Fewer AppStacks makes maintenance easier
- Simplified Application Lifecycle
- Individual AppStacks makes updates simpler



# Writable Volumes in App Volumes 3.0

- Assignments are done in Unified Admin Console
- Template used is User Installed Applications plus Profile
- Assignment require minimum 1 Application
- After Assignment, remember to wait a few minutes for Writable VMDK creation



Volume	Layout	Type	File System	Status	Capacity	Free Space	% Free	Fault Tolerance	Overh
(C:)	Simple	Basic	NTFS	Healthy (Boot, Page File, Crash Dump, Primary Partition)	23.90 GB	14.64 GB	61 %	No	0%
CVWritable	Simple	Basic	NTFS	Healthy (Active, Primary Partition)	10.00 GB	9.83 GB	98 %	No	0%
System Reserved	Simple	Basic	NTFS	Healthy (System, Active, Primary Partition)	100 MB	72 MB	72 %	No	0%
vwc:	Simple	Basic	NTFS	Healthy (Primary Partition)	100.00 GB	99.88 GB	100 %	No	0%

Disk	Layout	Type	File System	Status
Disk 0 Basic 24.00 GB Online	System Reserved 100 MB NTFS Healthy (System, Active, Primary Parti	(C:) 23,90 GB NTFS Healthy (Boot, Page File, Crash Dump, Primary Partition)		
Disk 1 Basic 10.00 GB Online	CVWritable 10.00 GB NTFS Healthy (Active, Primary Partition)			
Disk 2 Basic 100.00 GB Online	vwc: 100.00 GB NTFS Healthy (Primary Partition)			

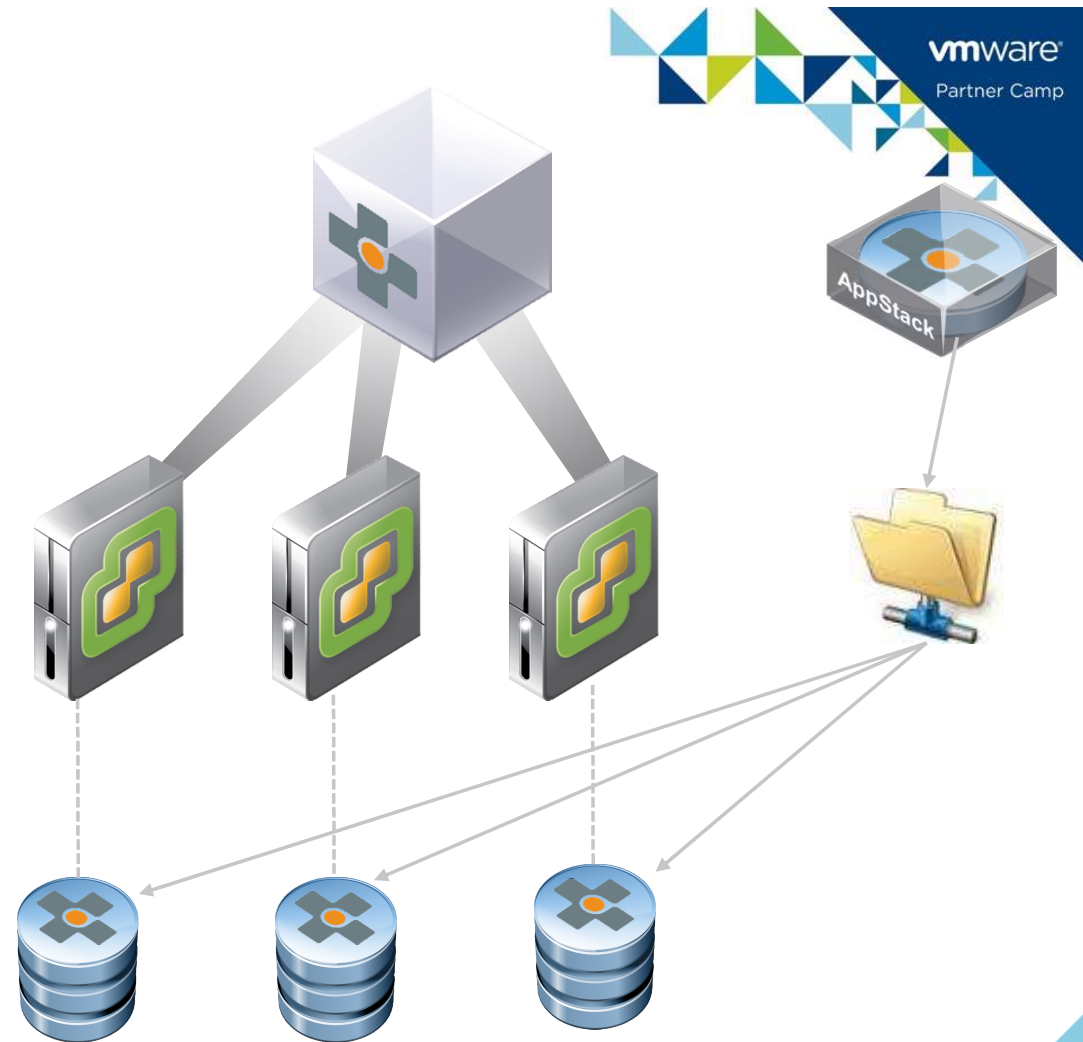
# AppScaling with Multizones

## Features

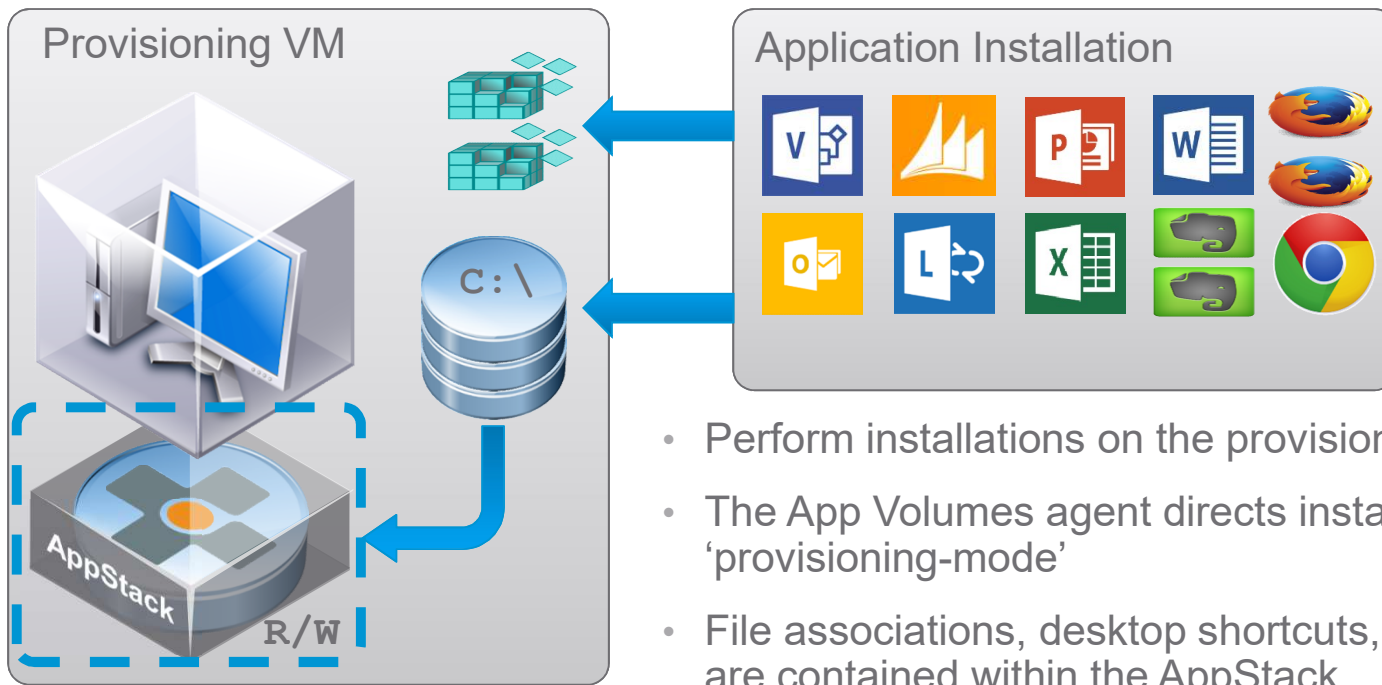
- AppStacks are placed in 1 Shared location
- vCenter automates AppStack Replication

## Benefits

- Simplifies and automates AppStacks distribution
- Allow AppStacks to be used across multiple vCenter



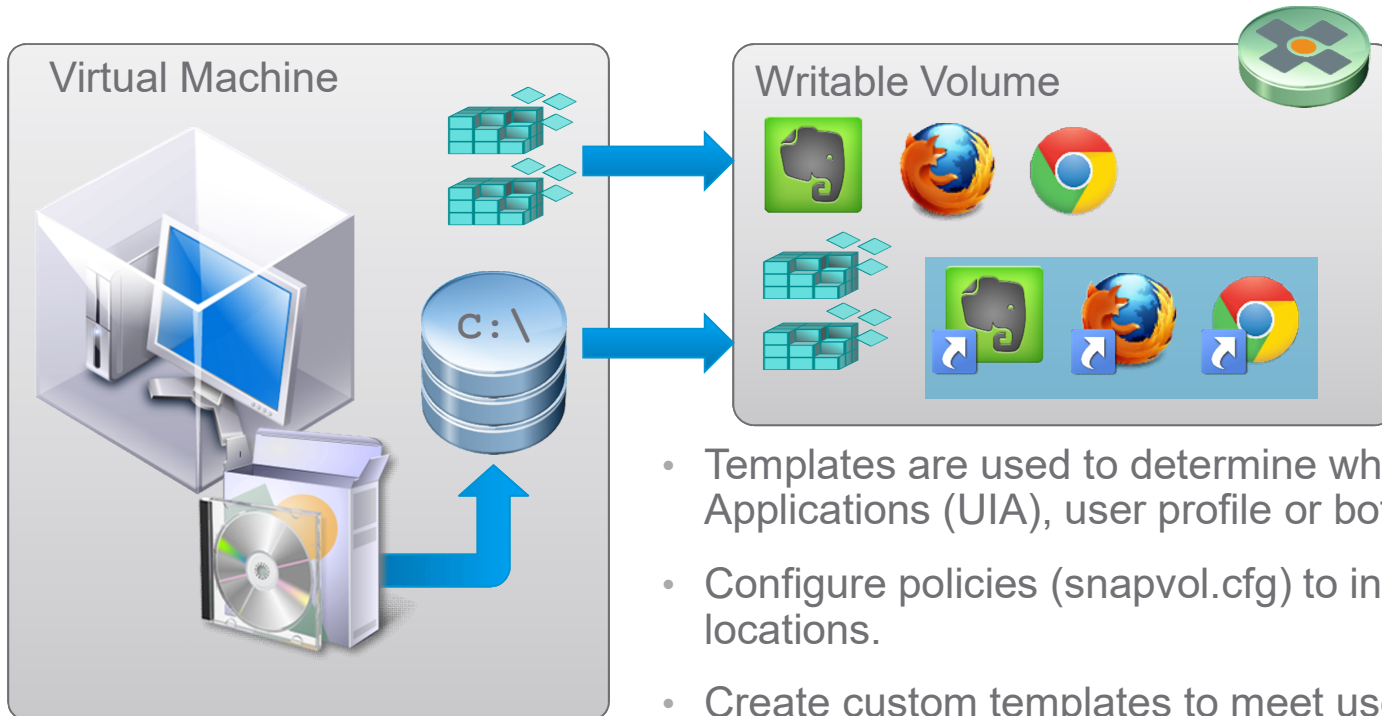
# Provisioning Applications into a Single AppStack



- Perform installations on the provisioning virtual machine
- The App Volumes agent directs installation to the AppStack in 'provisioning-mode'
- File associations, desktop shortcuts, registry entries, files and folders are contained within the AppStack
- Once provisioning is complete, the AppStack is made read-only and ready for assignment...



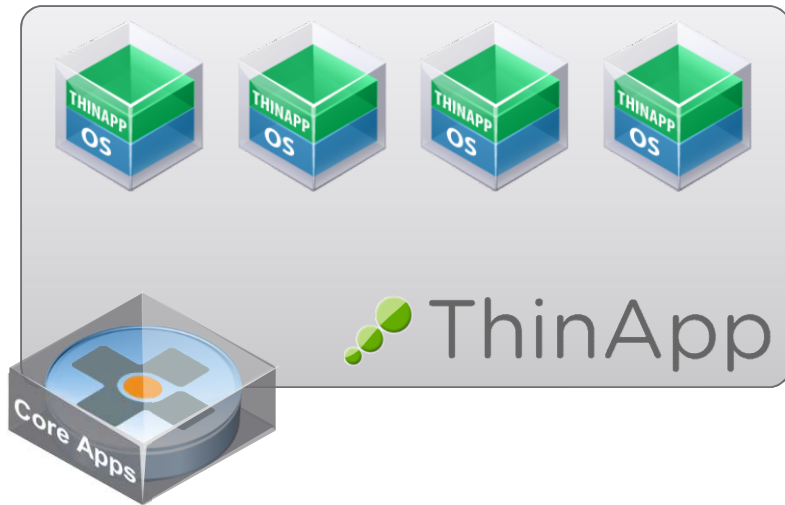
# User Installed Applications and Settings (Writable Volumes)



- Templates are used to determine whether to capture User Installed Applications (UIA), user profile or both.
- Configure policies (snapvol.cfg) to include / exclude file and registry locations.
- Create custom templates to meet use case requirements.

**Note:** Applications can also be uninstalled! (changes stored in the writable volume)

# Appsolution with App Volumes



- Avoid network transfer overheads due to ThinApp application streaming
- Isolate applications to avoid conflicts (DLL, shared libraries, Java versions)
- Use existing ThinApp packaged applications and avoid re-provisioning
- Ease of portability between different AppStacks

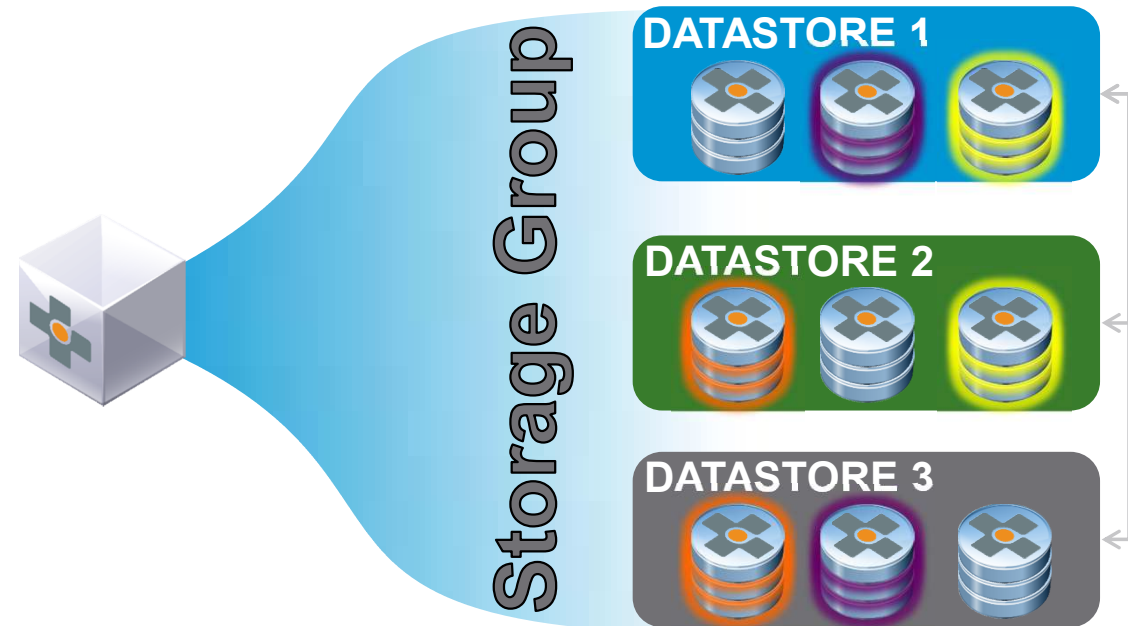
# App Volumes Storage Group

## Features

- AppStacks Storage Group:
  - Automatic Replication – Datastore copied every 4 hours
  - Automatic Import – Automatically available in Manager after replication
- Writable Volumes Storage Group:
  - Spread – Distribute evenly
  - Round-Robin – Distribute sequentially
- Used to group Datastores together

## Benefits

- IOPS aggregation, Reduce overall workload
- Distributes resource utilization
- Eliminates Attach Limitation
- Distribute storage cost more evenly



## Legend

- AppStacks
- Writable Volumes

# Office Supported versions



## Features

- Support for Office365 (2013 version)
- Additional delivery options for Office 2010 and 2013
- Office in base image and Visio and/or Projects in AppStacks is supported

## Benefits

- Flexible delivery of multiple versions of Office including latest release of Office365
- To Leverage AppToggle, Office applications needs separate installation



\*\*\*2016 not officially supported

The image features a city skyline at dusk, with various skyscrapers and buildings illuminated against a darkening sky. The VMware logo is positioned in the upper left corner of the image. A large, dark blue diagonal shape covers the right side of the image, containing the text 'Thank You!'.

vmware®

**Thank You!**